

ClariVein[®] OC

Infusion Catheter

Why ClariVein[®] OC?

- Low profile catheter
- Typically uses only one access point
- Procedure may be performed in an out patient setting
- No after-effects of multiple anesthetic injections
- Reduced pain^{1,2,3}
- Reduced treatment time^{1,3}
- Lack of heat reduces risk of heat related problems
- Faster return to normal activities¹
- Can treat below the knee
- May be used in the treatment of superficial venous reflux under the ulcer bed due to small profile^{4,5,6}

Indications for Use

The ClariVein[®] OC is indicated for infusion of physician – specified agents in the peripheral vasculature including for endovascular occlusion of incompetent veins in patients with superficial venous reflux

Ask your doctor about the difference ClariVein[®] OC infusion catheter can offer compared to other available options

ClariVein OC is not available in the USA

Contraindications

The ClariVein OC is not intended for use in the following:

- Coronary and cerebral vasculature
- Pulmonary vasculature
- Diseased and atherosclerotic arteries
- Infusion of blood and blood products

Adverse Effects

Potential adverse effects that might be associated with ClariVein OC are similar to those associated with any interventional procedure and include the following:

Abrupt thrombosis and occlusion of the treated vessel	Pain
Bleeding from the site of access	Pseudoaneurysm
Vascular rupture and perforation	Hypotension
Vascular dissection	Hypertension
Hemolysis	Infection at the access site
Haematoma	Deep Vein Thrombosis (DVT)
Embolisation	Neurological deficits including stroke and death
Reaction to contrast medium	

REFERENCES

1. van Eekeren, R.R., Boersma D., Konijn V., de Vries J.P., & Reijnen M.M., (2013, Februar) Postoperative Pain and Early Quality of Life After Radiofrequency Ablation and Mechanochemical Endovenous Ablation of Incompetent Great Saphenous Veins. *Journal of Vascular Surgery*, 57(2) p. 445-450
2. Lane, T., Bootun, R., Dharmarajah, B., Lim, C.S., Najem, M., Renton, S., Sritharan, K., Davies, A.H. A multi-centre RCT comparing radiofrequency & mechanical occlusion chemically assisted ablation of varicose veins – Final results of the Venefit versus ClariVein for varicose veins trial. *Phlebology* 2017;32 (2):89-98
3. Vun, S.V., Rashid, S.T., Blest, N.C., Spark, J.I., (2014, October). Lower pain and faster treatment with mechano-chemical endovenous ablation using ClariVein[®]. *Phlebology*, 30(10), 688-692
4. Kim, S.Y., Marin, M., Ting, W., Faries, P., Vouyouka, A., Yi Png, C., Tadros, R. Mechanochemical Ablation Improves Venous Ulcer Healing Compared With Thermal Ablation. *J Vasc Surg: V&LD* 2018; 5(1):159
5. Sullivan, L., Quach, G., Chapman, T. Retrograde mechano-chemical endovenous ablation of infrageniculate great saphenous vein for persistent venous stasis ulcers. *Phlebology* 2013;0(0):1-4
6. Moore, H.M., Lane, T.R., Franklin, I.J. & Davies, A.H. (2014, October). Retrograde Mechanochemical Ablation of the Small Saphenous Vein for the Treatment of a Venous Ulcer. *Vascular*, 22(5), 375-377



Merit Medical Systems, Inc.

Merit Medical Europe, Middle East, & Africa (EMEA)

Amerikalaan 42, 6199 AE Maastricht-Airport
The Netherlands
+31 43 358 82 22

merit.com ClariVein.com

406302101_002 ID092719

Minimal Recovery. Maximum Results.



ClariVein[®] OC

Infusion catheter for the treatment of incompetent veins in patients with superficial venous reflux, the underlying cause of varicose veins

ClariVein.com

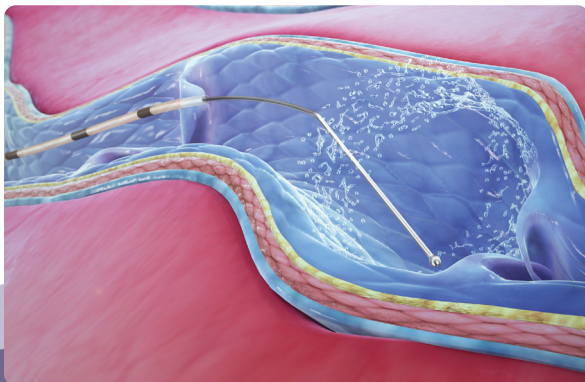
ClariVein[®] OC

Infusion Catheter

Non thermal non tumescent technique, reduces the need for multiple anesthetic injections.

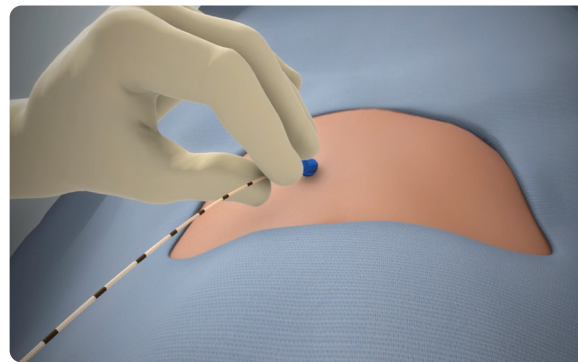
What is ClariVein[®] OC?

The ClariVein[®] OC is an ultra- thin sleek speciality infusion catheter. The unique 360 degree rotating wire of the catheter disperses the physician-specified agent in the vessel. The entire vessel is typically accessed through one small, pin-sized access point.



What Happens During The Procedure?

The procedure takes very little time and may be done in an out patient setting. You will be asked to lie down comfortably on a patient bed. Once your leg has been prepped and sterilised, the doctor will make a pin-sized prick in the leg and insert the ultra-slim catheter.



The device will administer medication to the targeted vein. Then the device is slipped out and a small bandage will be applied.



What Happens After The Procedure?

Follow your doctor's instructions for care after your procedure. Usually, you can return to normal activities immediately. You may need to wear compression stockings for a few days.