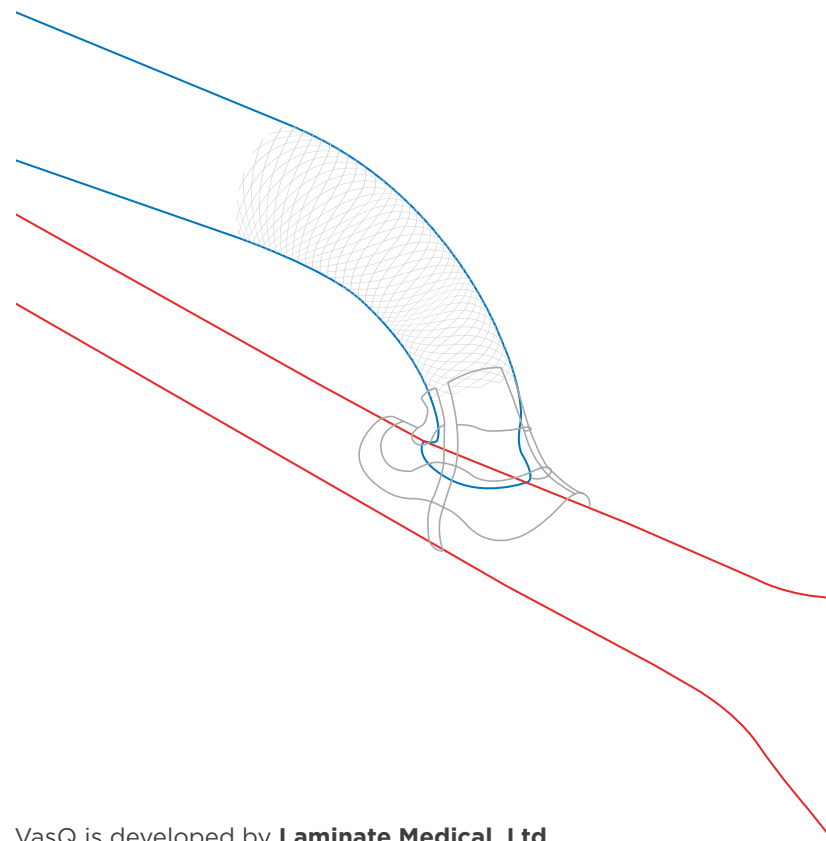


About Hemodialysis

Hemodialysis is a medical treatment that filters toxins from your blood when your kidneys fail.

The treatment requires a physician to create a vascular access point for blood to be removed, filtered and returned safely and efficiently.

There are a few types of vascular access, but the physicians universally prefer a direct connection between a vein and an artery called an **arteriovenous fistulas** (AVF) because of its demonstrated fewer complications and durability.¹



VasQ is developed by **Laminate Medical, Ltd.**
Visit Laminate at **www.laminatemedical.com**
to learn more about the company & the device.

CE 0344 CE 0297

VasQ is not available in the US
MK0054 Laminate Patient Brochure_EU Rev01

Laminate
Medical Technologies

info@laminatemedical.com
www.laminatemedical.com

VasQTM
Improving Vascular Access

Supporting Your Fistula for Dialysis

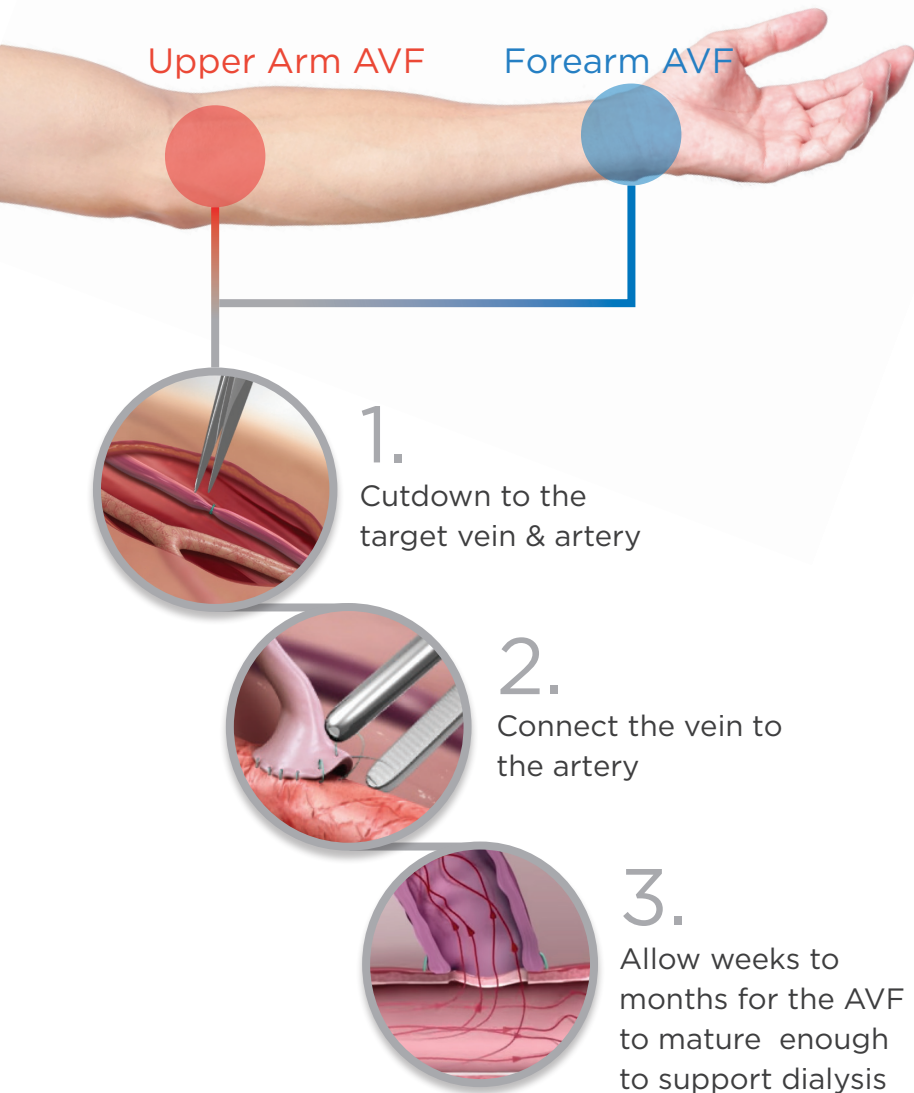


¹KDOQI 2006 Updates Clinical Practice Guidelines and Recommendations
American Journal of Kidney Diseases 2006;48:S176-S247



About Arteriovenous Fistulas (AVF)

An AVF can be created in multiple locations within your arm, preferably starting with the forearm to save the upper arm for future use. Your vein will need weeks to months for vessel walls to thicken and blood flow to increase before it is considered mature enough to support dialysis.



Why AVFs Fail to Mature

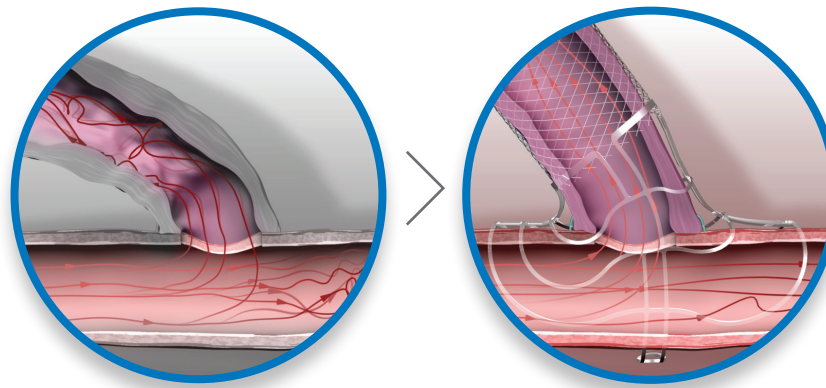
AVFs tend to have a high rate of early failure that may require multiple additional procedures to make them usable. Some may even need to be abandoned for a new vascular access.

Early failure tends to occur because the vein does not have the structure to support the change in blood flow and higher pressure from the artery.

VasQ Supports AVF Usability

The VasQ External Support provides structural support to reinforce the vein against the changes in blood flow and pressure. Clinical evidence has shown that VasQ reduces the risk of early failure and improves the potential that your AVF becomes usable for dialysis.¹

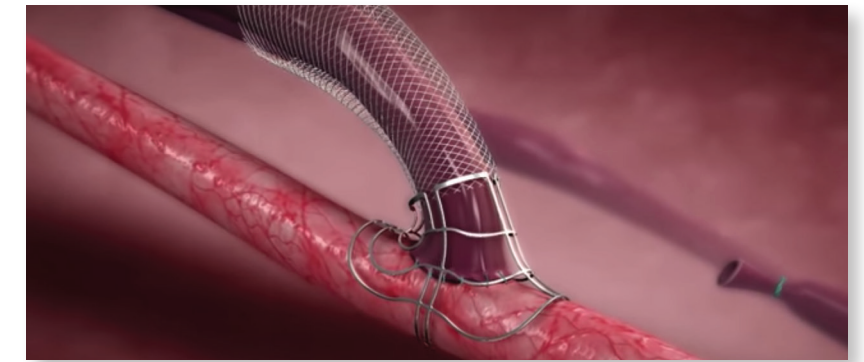
This means you have a better chance of receiving dialysis through your AVF without the need for additional procedures.



¹Karydis N et al. Am J Kidney Dis. 2020 Jan;75(1):45-53.

VasQ Procedure

VasQ is placed at the time of the AVF creation procedure with no impact to your hospital stay or recovery.



Follow up

Your surgeon will schedule a follow-up appointment within the next month to assess your AVF and eventually determine when it is ready to be used for dialysis. Once ready, your nephrologist will make the plan of when to begin dialysis through the AVF.



For more information about kidney disease and dialysis, please visit:

<https://www.kidney.org/atoz/content/hemodialysis>